

International Conference on Chronic Pathologies

Saturday 9th and Sunday 10th of September 2017

EARLY BIRD PRICING: 150 € | MUST REGISTER BY: JUNE 30, 2017

DOCTORS TALKING TO DOCTORS!

A two-day conference based on a formal program of information sharing among leading practicing clinicians.

LEADING EUROPEAN & AMERICAN DOCTORS

The conference faculty consists of fourteen European & American practitioners at the forefront of treating the most difficult patients.

RECOGNIZING PATHOLOGIES

You will learn to recognize pathologies even when lab tests are unclear.

NEW PROVEN TREATMENT PROTOCOLS

With ample time for questions and answers, you will learn new treatment protocols & testing techniques.

RETURN TO YOUR PRACTICE WITH NEW TOOLS TO TREAT PATIENTS

Incorporate new protocols when you return from the conference. Plus, you will have made connections with many leaders in their respective fields.

Cost

195 euro

Includes 2 day conference and a networking dinner on Saturday evening

Location

ALM
Filip Williotstraat 9
2600 Berchem
Belgium

Accommodation

Crowne Plaza Antwerpen
Gerard Le Grellelaan 10
B-2020 Antwerp
Belgium

Email: info@chronic-pathologies.com

Web: www.chronic-pathologies.com



Dr. Joe Burrascano (US)

Diagnosing and Testing of Multi-Infectious Diseases



Dr. Jack Lambert (IRL)

Upregulation Underlying Infections by Vaccination & Major Trauma



Dr. Daan De Coninck (BEL)

Non-Surgical Approach to Chronic Musculoskeletal Pain



Dr. Magdalena Cubala (POL)

Chronic Infectious Diseases in Children with Neurodevelopment Problems



Dr. Marjo Valonen (FIN)

Integrative Approach to Chronic Illness



Dr. Herbert Rixecker (GER)

Chronic Infections of the Jaws and Their Relationship to General Diseases like Lyme



Dr. Harald Bennefeld (GER)

Practical Approach to Diagnostics and Treatment of Chronic Neurologic Symptoms



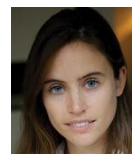
Dr. Sonia Rapaport (US)

Mold – the Hidden Pandemic



Dr. Armin Schwarzbach (GER)

The Role of Viruses and Multi-infections in Cancer and Degenerative Diseases



Barbara De Rijdt RPharm (BEL)

SIBO (Small Intestinal Bacterial Overgrowth) & LPS-induced Inflammation



Dr. Rudy Proesmans (BEL)

Science-based Complementary Cancer Therapy



Pol De Saedeleer RPharm (BEL)

Analysis of Abnormal Immune Response Resulting in Chronic Inflammation and Autoimmunity in Chronic Pathologies



Dr. Carla Marzetti (IT)

Intestinal Microbiota: Parasites, Bacteria, Fungi - New Diagnostics and Treatments



Dr. Katharina Deutsch (NL)

Bioidentical Hormone Replacement in Managing Chronic Illness

Sponsored by:



www.researchednutritionals.com



www.nutrined.com

LECTURE SUMMARIES

Dr. Daan De Coninck

Non-Surgical Approach to Chronic Musculoskeletal Pain

The lecture on acute and chronic musculoskeletal pain addresses prolotherapy, a non-surgical orthopedic treatment that uses injection of an irritant solution into a joint space, ligaments, or tendon insertion to relieve pain or address ligament laxity. The lecture will cover the scientific basis for the therapy, as well as the indications that will assist you in your practice.

Dr. Rudy Proesmans

Science-based Complementary Cancer Therapy

Complementary cancer treatment can improve the quality and quantity of life of cancer patients, primarily by reducing cancer symptoms or side effects associated with standard cancer treatment. Nutrition is very important and a low carbohydrate diet is advised. A low-calorie diet of 800-1000 kcal 48 hours before chemotherapy reduces the side effects of chemo and intensifies its effect. The latest scientific research on herbs, vitamins, minerals, omega-3, IV treatments will be discussed. Mistletoe is very important in the support of the cancer patient. It has a long history of use in cancer treatment in Germany and it has over 600 papers showing its efficacy. Intravenous Vitamin C can be very useful but not all patients react equally (responders - non-responders). The doctor will leave this lecture with tools to use in his/her clinical setting.

Dr. Kathrin Deutsch

Bioidentical Hormone Replacement in Managing Chronic Illness

Hormone replacement therapy is now a widely available treatment option that is growing in popularity. This lecture will discuss the role of bioidentical hormone replacement in managing chronic illness, as well as practical considerations, possible loopholes and options for bioidentical hormone therapy. The doctor will also discuss dietary factors, toxic load, methylation disorders and hormone support in the management of chronic health issues.

Dr. Armin Schwarzbach

The Role of Viruses and Multi-infections in Cancer and Degenerative Diseases

Little is known about cancer and degenerative diseases in correlation with multiple viral and bacterial infections. There is more known about single infections with, for example, Coxiella burnetii or Epstein Barr Virus in Non-Hodgkin Lymphoma. Conversely, almost nothing is known about the possibility of combined multiple infections in cancer. Research on "Iceman Otsi", the 5,000-year-old mummy found in the Italian Alps in 1991, demonstrated that he had osteoporosis, possibly based on an infection with Borrelia burgdorferi.

The presentation will show some known correlations of isolated virus or bacterial infections, including tick-borne diseases with Borrelia burgdorferi and coinfections in cancer and degenerative diseases. Laboratory testing panels for tick-borne diseases and correlated infections in leukemia and other types of cancer and degenerative illnesses will be presented.

Additionally, the laboratory testing complexity of multiple chronic infections will be discussed in regards to unexplained

syndromes such as Fibromyalgia, Parkinson's Disease, Amyotrophic lateral sclerosis (ALS), Multiple Sclerosis and Alzheimer's. Depending on the laboratory test findings, there can be an option for some patients in treating cancer and degenerative illnesses with anti-bacterial and anti-viral remedies.

Dr. Marjo Valonen

Integrative Approach to Chronic Illness

Marjo Valonen, MD is an expert in integrative and functional medicine and she primarily treats chronic Lyme patients, many of whom have had prior treatment failures or have symptoms that have not resolved. These problems can persist even if primary treatment appears to be successful, resulting in reduced the quality of life for the patient. She demonstrates integrative approaches to overcome prior treatment barriers, putting patients on the road to recovery. Her approach is hands-on practical and illustrated through patient cases.

Dr. Sonja Rapaport

Mold – the Hidden Pandemic

A common theme in chronic illnesses is inflammation. While many treatment approaches seek to turn off the inflammatory response, they generally ignore its underlying causes. This lecture will explore the pathophysiology of Chronic Inflammatory Response Syndrome (CIRS), an illness which masquerades as chronic fatigue, ADD, memory loss, and many other symptoms. In addition to providing an understanding of the genetic predisposition and environmental triggers at the root this illness, we will discuss the resulting neurological, hormonal, and immune dysregulation as part of a comprehensive review of what happens when at-risk individuals are exposed to water-damaged buildings.

The lecture includes introduction of effective treatment protocols tailored to the patient, focusing on biotoxin removal, immune support, mitochondrial repair, neurological recovery, and hormonal regulation. With this practical presentation of therapeutics across different clinical settings, we will discuss the synthesis of treatments to address the cause as well as the span of symptoms exhibited in CIRS.

Dr. Carla Marzetti

Intestinal Microbiota: Parasites, Bacteria, Fungi - New Diagnostics and Treatments

The human intestinal microbiota, defined by scientists as a "super organism", consists of many bacteria that exceed the total number of our cells and plays an important role in determining one's health state. If the delicate balance that regulates interactions with the host is altered, it increases the possibility & potential of developing multiple chronic diseases. For the greatest chance of patient success, it is important to evaluate the patient's total flora components, including protozoa, bacteria and fungi. A correct diagnosis leads to a more focused and effective treatment.

Dr. Harald Bennefeld

Practical Approach to Diagnostics and Treatment of Chronic Neurologic Symptoms

Practical workshop in diagnosis and treatment of chronic neurologic pathologies. Using less common diagnostic markers offers the practitioner a more complete picture of the patient's health challenges, leading to more effective diagnosis and treatment. This lecture is hands on.

Pol De Saedeleer, R. Pharm

Analysis of Abnormal Immune Response Resulting in Chronic Inflammation and Autoimmunity in Chronic Pathologies

Uncontrolled innate (cellular) immune response leads to destructive inflammation, autoimmunity and chronic pathology. This lecture focuses on concrete approaches to reduce or eliminate inflammation, gut permeability, heavy metals and infections. Resetting out of control immune response reduces destructive inflammation and chronic pathology.

This hands-on lecture is meant to analyze the situation and offer solutions that the doctor can implement when he/she returns to the office.

Dr. Joe Burrascano

Diagnosing and Testing of Multi-Infectious Diseases

This lecture will focus on how to clinically identify Lyme Borreliosis, the common coinfections, and how to interpret test findings. Treating tick-borne infections presents the practitioner with a wide variety of challenges. If not properly treated, the patient may never fully recover.

This lecture will include a short review of antibiotic therapy and a more detailed look at the nutritional and supportive therapies that offer the most promise to your patients. It will also cover:

- How to diagnose Lyme Borreliosis and coinfections when lab testing is not sensitive or specific enough to definitively result in a diagnosis?
- When to run tests on your suspected Lyme patients so that you have the greatest likelihood of the lab test correctly identifying the infection?
- What clinical symptoms should you be looking for in making a clinical diagnosis?
- How to best integrate antibiotic therapy and nutritional therapy for the most successful patient outcome?

Barbara De Rijdt, R. Pharm

SIBO (Small Intestinal Bacterial Overgrowth) & LPS-induced Inflammation

This lecture is an analysis of the contributing factors and associated pathologies we see in Small Intestinal Bacterial Overgrowth. The increased gut permeability favors the translocation of microbiome derived lipopolysaccharides (LPS) inducing metabolic diseases and neuroinflammation.

Dr. Jack Lambert

Upregulation Underlying Infections by Vaccination & Major Trauma

Stress, trauma or perturbations of the immune system may cause the upregulation or reactivation of a previously acquired and subclinical infection or infections. We will present an audit of patients in our practice who presented in such a manner and provide instructive cases which support this hypothesis.

Dr. Magdalena Cubala

Chronic Infectious Diseases in Children with Neurodevelopment Problems

Neurodevelopmental disorders (ND) can manifest as neuro-psychiatric problems or impaired motor function, learning, language or non-verbal communication, ADHD, autism, conduct disorders, cerebral palsy and impairments in vision and hearing.

Recent scientific findings provide strong evidence that persistent inflammation might play an important role in ND. Chronic infectious diseases, like Borreliosis, Bartonellosis, Yersiniosis, Toxoplasmosis, as well as viral infections and others may lead to activation of autoimmune processes, resulting in alterations in neurotransmitter systems via kynurenine pathway.

Treatment of infection(s) and regulation of the immune system with proper supplementation might alleviate symptoms in children with ND, leading to significant improvement of their conditions.

Dr. Rixecker

Chronic Infections of the Jaws and Their Relationship to General Diseases like Lyme

This lecture will focus on the role dental health plays in infections, specifically Lyme Disease. As a maxillo-facial oral surgeon and Lyme patient, the doctor will demonstrate that many Lyme symptoms may be alleviated or disappear as a result of focusing on removing dead teeth, teeth with root fillings, displaced teeth, jaw cysts and other infections of the jaws. This case study presentation includes a statistical evaluation of dental procedures on patient results.